

# **NEOCOLONIAL DYNAMICS IN THE STRAWBERRY EXPORT SECTOR IN MOROCCO**

**Juana Moreno Nieto**









Aix Marseille Univ, CNRS, LEST

Aix Marseille Univ, Avignon Univ., EHES, CNRS, CNE



Tanger-Assilah

Tétouan

-  Zona de cultivo de fresa
-  Zona de unidades de acondicionamiento y congelación de fresa
-  Perímetro
-  Provincias
-  Comunas
-  Ciudades

Larache

Larache

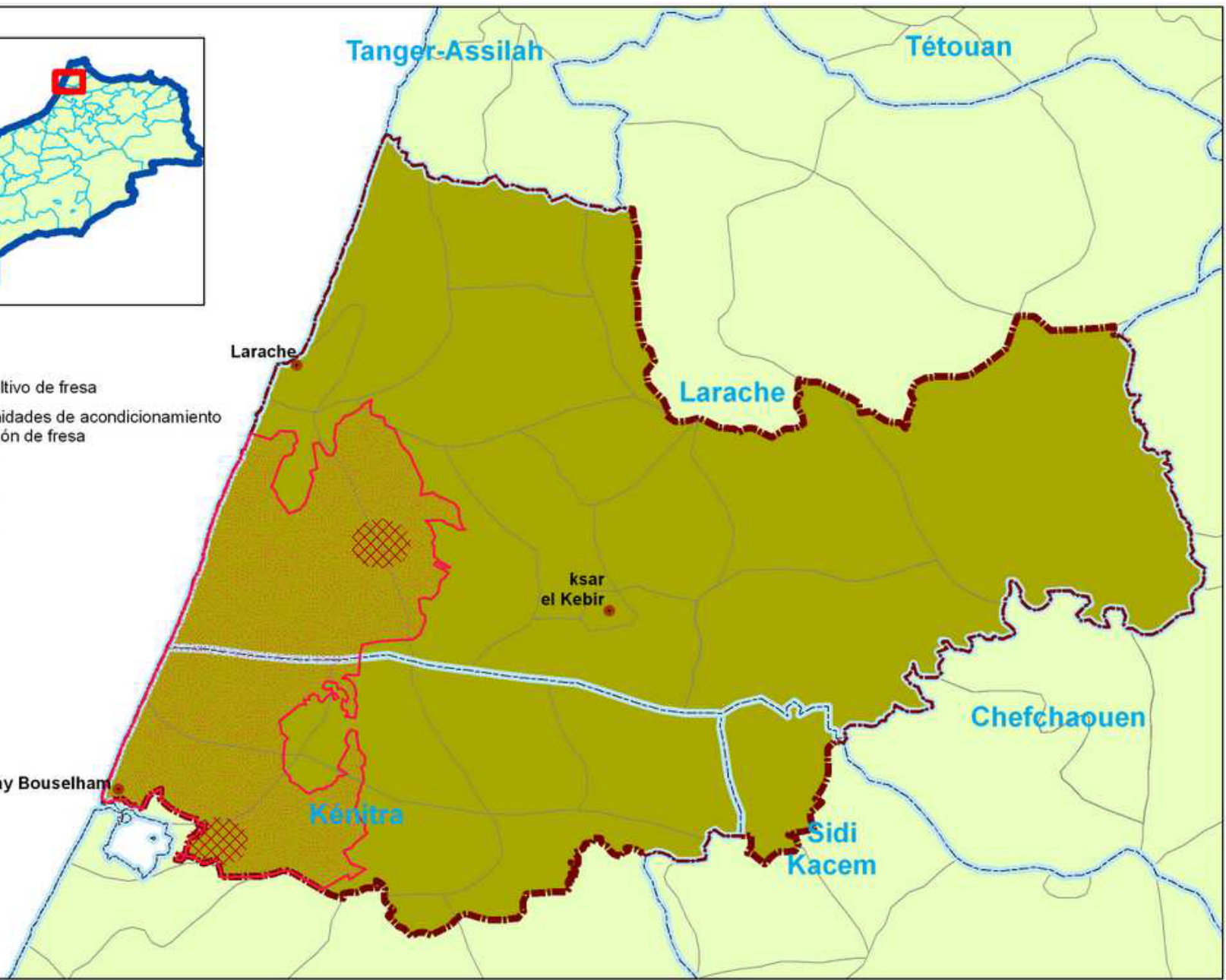
ksar el Kebir

Chefchaouen

Moulay Bouselham

Kénitra

Sidi Kacem



# History: the development of agrarian capitalism in the region

- French Protectorate (1912-1956)
  - ▣ 1930'. Policies of irrigation, intensification and diversification of crops.
  - ▣ Gharb: Big companies and medium size producers. The citrus trees sector: intensive agriculture + wage labor.
  
- Spanish Protectorate (1912-1956)
  - ▣ Weak implementation of capitalist agriculture
  - ▣ Loukkos plain: the great exception
    - The role of the Lucus Agrarian Company (1927)

# The beginnings of the strawberry sector

- Off-shoring of Spanish companies + action of different economic agents from the Protectorate era
  
- Links with the strawberry sector in Huelva, Spain:
  - Flows of Capital, knowledge and Seasonal workers
  - Commercial competition
  - Asymmetrical relations

# The current actors

## 1. Agricultural producers

- ▣ Mostly Moroccan.
- ▣ Heterogeneity and predominance of big and medium size producers.

### Fields structure (2004-2009)

Size	Number of producers	% Producers	Surface distribution
<5 ha	182	69%	16%
5-20 ha	40	19%	26%
>20 ha	31	12%	58%
<b>TOTAL</b>	<b>264</b>	<b>100%</b>	<b>100%</b>

## 2. Export, freezing and conditioning companies

- ▣ Mostly foreign capitals.
- ▣ Multinational companies entering.

Spanish	Moroccan	Belgium	French	Italian	Total
12	6	2	2	1	23

Source: ORMVAL 2010

- ▣ Dominant position over agricultural producers.
  - ▣ Export quasi-monopoly
  - ▣ Seedling control



Thank you!

[juanamorenoniето@yahoo](mailto:juanamorenoniето@yahoo)